



VOICESOLO XT
PERSONAL VOCAL MONITORS

VSM-300 XT
USER MANUAL




IMPORTANT SAFETY INSTRUCTIONS



The lightning flash with an arrowhead symbol within an equilateral triangle, is intended to alert the user to the presence of uninsulated "dangerous voltage" within the product's enclosure that may be of sufficient magnitude to constitute a risk of electric shock to persons.



The exclamation point within an equilateral triangle is intended to alert the user to the presence of important operating and maintenance (servicing) instructions in the literature accompanying the product.

- 1 Read these instructions.
- 2 Keep these instructions.
- 3 Heed all warnings.
- 4 Follow all instructions.
- 5 Do not use this apparatus near water.
- 6 Clean only with dry cloth.
- 7 Do not block any ventilation openings. Install in accordance with the manufacturer's instructions.
- 8 Do not install near any heat sources such as radiators, heat registers, stoves, or other apparatus (including amplifiers) that produce heat.
- 9 Do not defeat the safety purpose of the polarized or grounding-type plug. A polarized plug has two blades with one wider than the other. A grounding type plug has two blades and a third grounding prong. The wide blade or the third prong are provided for your safety. If the provided plug does not fit into your outlet, consult an electrician for replacement of the obsolete outlet.
- 10 Protect the power cord from being walked on or pinched particularly at plugs, convenience receptacles, and the point where they exit from the apparatus.
- 11 Only use attachments/accessories specified by the manufacturer.
- 12  Use only with the cart, stand, tripod, bracket, or table specified by the manufacturer, or sold with the apparatus. When a cart is used, use caution when moving the cart/apparatus combination to avoid injury from tip-over.
- 13 Unplug this apparatus during lightning storms or when unused for long periods of time.
- 14 Refer all servicing to qualified service personnel. Servicing is required when the apparatus has been damaged in any way, such as power-supply cord or plug is damaged, liquid has been spilled or objects have fallen into the apparatus, the apparatus has been exposed to rain or moisture, does not operate normally, or has been dropped.

Warning!

- To reduce the risk of fire or electrical shock, do not expose this equipment to dripping or splashing and ensure that no objects filled with liquids, such as vases, are placed on the equipment.
- This apparatus must be earthed.
- Use a three wire grounding type line cord like the one supplied with the product.
- Be advised that different operating voltages require the use of different types of line cord and attachment plugs.
- Check the voltage in your area and use the correct type. See table below:

Voltage	Line plug according to standard.
110-125V	UL817 and CSA C22.2 no 42.
220-230V	CEE 7 page VII, SR section 107-2-D1/IEC 83 page C4.
240V	BS 1363 of 1984. Specification for 13A fused plugs and switched and un-switched socket outlets.

- This equipment should be installed near the socket outlet and disconnection of the device should be easily accessible.
- To completely disconnect from AC mains, disconnect the power supply cord from the AC receptable.
- The mains plug of the power supply shall remain readily operable.
- Do not install in a confined space.
- Do not open the unit - risk of electric shock inside.

Caution:

You are cautioned that any change or modifications not expressly approved in this manual could void your authority to operate this equipment.

Service

- There are no user-serviceable parts inside.
- All service must be performed by qualified personnel.

IMPORTANT SAFETY INSTRUCTIONS

EMC / EMI.

This equipment has been tested and found to comply with the limits for a Class B Digital device, pursuant to part 15 of the FCC rules.

These limits are designed to provide reasonable protection against harmful interference in residential installations. This equipment generates, uses and can radiate radio frequency energy and, if not installed and used in accordance with the instructions, may cause harmful interference to radio communications. However, there is no guarantee that interference will not occur in a particular installation. If this equipment does cause harmful interference to radio or television reception, which can be determined by turning the equipment off and on. The user is encouraged to try to correct the interference by one or more of the following measures:

- Reorient or relocate the receiving antenna.
- Increase the separation between the equipment and receiver.
- Connect the equipment into an outlet on a circuit different from that to which the receiver is connected.
- Consult the dealer or an experienced radio/TV technician for help.

For the customers in Canada:

This Class B digital apparatus complies with Canadian ICES-003. Cet appareil numérique de la classe B est conforme à la norme NMB-003 du Canada.

Certificate Of Conformity

TC Electronic A/S, Sindalsvej 34, 8240 Risskov, Denmark, hereby declares on its own responsibility that the following product:

VoiceSolo VSM-300XT- Active Voice Monitor and Control

- is covered by this certificate and marked with CE-label conforms with following standards:

EN 60065 (IEC 60065)	Safety requirements for mains operated electronic and related apparatus for household and similar general use
EN 55103-1	Product family standard for audio, video, audio-visual and entertainment lighting control apparatus for professional use. Part 1: Emission.
EN 55103-2	Product family standard for audio, video, audio-visual and entertainment lighting control apparatus for professional use. Part 2: Immunity.

With reference to regulations in following directives:
73/23/EEC, 89/336/EEC

Issued in Risskov, 10 - 2007
Mads Peter Lübeck
Chief Executive Officer

TABLE OF CONTENTS

<i>Important Safety Instructions</i>	<i>a</i>
<i>Certificate of Conformity</i>	<i>b</i>
<i>Table of Contents</i>	<i>3</i>
<i>Introduction</i>	<i>4</i>
<i>Front panel diagram</i>	<i>6</i>
<i>Back panel diagram</i>	<i>7</i>
<i>I/O box diagram</i>	<i>8</i>
<i>Mic stand mounting procedure</i>	<i>11</i>
<i>Making connections</i>	<i>12</i>
<i>Overcoming feedback</i>	<i>13</i>
<i>Setup diagrams</i>	<i>14</i>
<i>Specifications</i>	<i>16</i>
<i>Audio path diagram</i>	<i>17</i>

Specifications, interface, and features are subject to change without notice due to continued product improvement

INTRODUCTION

Welcome to VoiceSoloXT

The TC-Helicon VoiceSoloXT VSM range of near field live monitoring speakers is a new concept in personal monitoring. TC-Helicon strives for excellence in all things related to vocals, and the VSM range builds upon the success and worldwide reputation of TC-Helicon's vocal expertise.

If you can't hear yourself correctly in a live situation, it's hard to produce a good performance. VSM monitors are designed to integrate into a boom-style microphone stand bringing the speaker close to the performer. This yields a wide range of benefits over existing wedge-type or in-ear options such as:

- Lower monitor bleed into the main PA sound
- High volume level before feedback
- Better interaction with audience; stage space is reclaimed from floor wedges and ear plug barriers are not required as with in-ear monitors.

The VoiceSoloXT VSM monitors use a two-way point source ICT™ driver that eliminates the problem of hearing separated high and low frequencies which happens when listening to conventional speaker systems. This is especially important when used on a microphone stand as the speaker is located very close to the listener and the separation would be more evident.

Features:

- Improved high frequency response in the critical 4 to 10 kHz range resulting in higher accuracy and smoother sound.
- Quick mic stand set up. Integrates with boom so the same stand is used for the monitor and microphone.
- Versatile placement options provided by dual stand mounting holes and dual bevelled edges for floor mounting.
- Two-way point source 6.5" ICT™ driver for optimal near-field live monitoring.
- High volume capability: 116dB peak SPL at .5m
- 150W BASH amplifier.
- Cast aluminum enclosure for maximum rigidity and minimum cabinet resonance
- Front panel mounted controls for easy access.
- External IO box interfaces with instruments, aux mixes
- Microphone preamp, stereo line and aux inputs.
- Phantom power on mic input
- Pass thru to house mixer on all inputs
- Mic Level, line level and master level controls.
- Shape EQ control on Mic input, plus 18dB/octave 75hz Low Cut Filter.
- Selectable 75Hz/150 18dB/Octave Low Cut Filter on Speaker output mix
- Selectable Mono/Stereo operation for line input
- Output for active subwoofer

About TC-Helicon



TC-Helicon's core value is that the voice is the world's most beautiful instrument. Therefore, everything TC-Helicon does is dedicated to this instrument. TC-Helicon envisions a world where those who work with voice are able to bring out its very best and where the possibilities of vocal craft are endless.

The company's mission was galvanized by a simple question, "Isn't it time that someone finally provided dedicated tools and solutions for voice?"

TC-Helicon is revolutionizing the vocal channel by providing innovative tools and solutions for people who create and work with the speaking and singing voice. Our customers include the most demanding of live performers, producers, broadcasters and recording engineers.

Enjoy!

The TC-Helicon Team

a TC Group company

INTRODUCTION

Preliminary Recommendations

The VoiceSoloXT VSM series of monitors are capable of very high sound pressure levels (SPLs) especially at the close range when integrated onto a microphone stand. They were designed this way to be able to be loud enough to compete with live acoustic drum kits. In situations where high monitoring volumes are required we recommend that ear protection be used.

For continuous exposure we recommend the occasional use of a sound level meter capable of measuring the sound level over a period of exposure according to noise control standards. This should be used to check that noise levels are always within safety limits.

Unpacking

Open the box from the top and remove cabling and IO box (VSM-300XT only). Lift out Styrofoam insert, then using both hands lift out VoiceSoloXT. Remove plastic bag from VoiceSoloXT. Nothing in your speakers should rattle. Inspect each speaker for signs of transit damage. In the unlikely event of this having occurred inform the carrier and the supplier. Keep all the packaging if damage has occurred, as this will show evidence of excessive handling forces. It is also a good idea to keep the packaging if possible for future transportation.

Registering VoiceSoloXT

There are two methods for registering your VoiceSoloXT:

- Online: visit www.tc-helicon.com/VoiceSolo and click Product Registration in the left hand column.
- Mail: complete and return the registration card included with your product

Support

If you run into technical challenges, TC-Helicon will be more than happy to help. There are a number of sources for product support. We've prioritized them below according to the speed at which you will access the help information.

1. Manual: The manual for VoiceSoloXT VSM-300XT is extensive. It's a good source of application information and in depth answers for common questions.
3. On-Line: visit www.tcsupport.tc to search and ask for answers on up to date questions about VoiceSoloXT.
4. Phone:
International: +45 8742 7000
USA & Canada: 818-665-4900

FRONT PANEL DIAGRAM



1. CLIP LED

This LED is a sum of clipping from the MIC, LINE and AUX inputs.

2. MIC IN level control

This control trims the gain for the microphone input. Adjust this so that only the loudest notes you sing light the CLIP LED periodically. If you find the CLIP LED is lighting even with the MIC IN control at minimum, push the +20dB button to the out position.

3. MONO / STEREO switch

This switch expands the capabilities of two VoiceSoloXTs when operation as a stereo PA is desired. When the stereo option is chosen (switch in), an audio signal received at the RIGHT input on the I/O box is passed to another VoiceSoloXT from the MIX output jack. The audio signal received in the LEFT input is produced from the main VoiceSoloXT. The OUTPUT control on the main unit controls both levels. Choosing the mono option (switch out) collapses the left and right inputs to mono.

4. The SHAPE control

This imposes a useful tone curve onto the MIC IN input. It is intended to simulate the tone of a studio condenser mic from a standard dynamic mic. It is not recommended for use with bright mics such as condensers because too much high frequency may result. At minimum position, the SHAPE circuit is defeated and the mic is heard flat, at fully clockwise, the SHAPE circuit is fully activated.

5. LINE IN level control

This sets the gain for the line input. Adjust this so that only the loudest notes you play light the CLIP LED.

6. The LOW and HI EQ controls

These are basic high (12 kHz) and low (80 Hz) frequency shelving controls. They can add warmth and bite to the monitor sound which can be desirable. Be aware though, that too much of either at loud volumes can result in feedback or distortion.

7. The 75/150 Hz LOW CUT button

A low frequency filter is always engaged on VoiceSoloXT to preserve amplifier power and to protect the speaker. You have your choice of 75 Hz (switch out) which allows some low frequency to be reproduced, or 150 Hz (switch in) which rolls off low end to allow higher volume if required.

8. OUTPUT level control

This is the master control for all of the inputs.

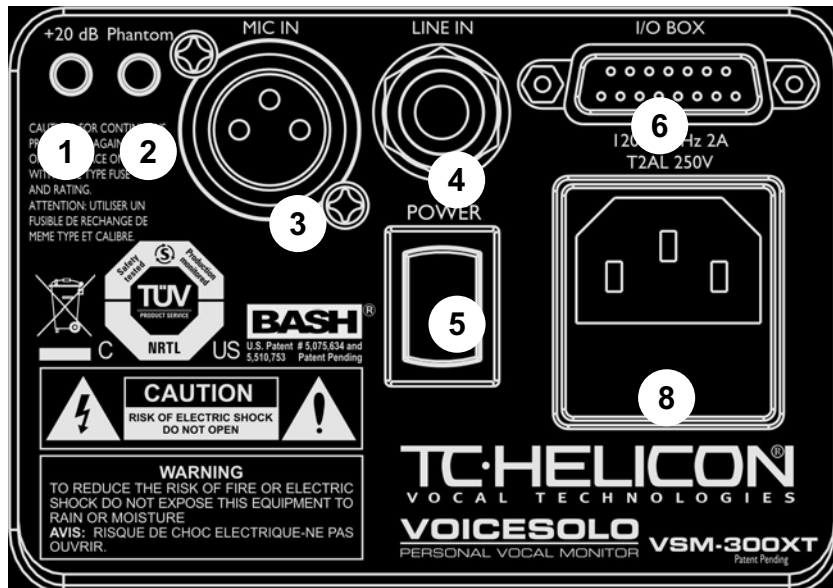
9. POWER indicator

This lights when power is applied.

10. Tuned bass port

This enhances VoiceSoloXT's output of low frequencies. It is also useful as a handle when carrying the unit.

BACK PANEL DIAGRAM



1. +20 dB button

The +20 switch, when pushed in, adds more gain to your dynamic mics that may produce lower output. When the switch is out, it is possible to connect high output condenser mics or some line level devices. Reduce the Output level control before pushing this in as feedback can result.

2. Phantom power button

The Mic in has a phantom power switch that can be pushed in to power condenser microphones. Otherwise this should be left out. Before inserting a jack from a mic that requires phantom power, it's a good idea to push the switch so it is out and power is turned off and once that's done, insert the jack. Once the mic and cable are connected, you can turn on phantom power.

3. MIC IN jack

Connect the XLR connector from your microphone here when you will be using VoiceSoloXT without the I/O box. Adjust the front panel MIC IN knob so that only the loudest note you will sing lights the red CLIP LED. If the loudest notes don't light the CLIP LED, press the +20 dB switch to add gain.

4. LINE IN jack

You may connect a mono line level signal through this jack such as an acoustic guitar pickup, guitar multi-effect, mono keyboard or an auxilliary send from your mixer. The LINE IN control on the front panel is a separate mix control for this input.

5. Power switch

The "I" character represents power on, the "O" character represents power off.

6. I/O Box connector

Connect the included cable from this DB15 input to the same connector on the I/O box for additional inputs and outputs.

7. AC power input

Connect the standard IEC power cable that is included with VoiceSoloXT here.

8. Fuse holder

The power amp is protected with this fuse. If the switch is on and VoiceSoloXT's power LED will not light, check the fuse here and only replace with the correctly rated fuse.

I/O BOX DIAGRAM



Inputs

All inputs and outputs are balanced but unbalanced cables and equipment may be used as well.

1. MIC input

Connect your dynamic or condenser microphone to this XLR jack. This jack is parallel with the MIC IN jack on the VoiceSoloXT.

2. LINE input 1

You may connect either a mono instrument or the left side of a stereo signal source to this 1/4" jack. The mono/stereo function switch is on the front panel of VoiceSoloXT. You will need another active (powered) VoiceSoloXT to produce stereo. The mix level of both LINE inputs is controlled by the LINE IN control on the front panel.

3. LINE input 2

Connect the right side of a stereo signal source here. When the front panel mono/stereo switch is set to mono, this input is summed with the left LINE input.

4. AUX input

This is an additional mono input. This would typically be used to receive a monitor mix or instruments from a mixer. There is no separate mix adjustment on the front panel for this input like there is for the MIC and LINE inputs so the source should have its own level control.

5. VoiceSoloXT connector

Connect the supplied DB15 cable here to connect the I/O box with VoiceSolo VSM-300XT.

Pass Thrus

These connections are used to send the individual inputs to separate channels in an external mixer. This type of connection is known as a passive splitter. The signals produced here are exact duplicates of signals received at the respective inputs; no amplification or level control is applied.

6. MIC thru

This may be connected to the Mic In on an external mixer. If phantom power is activated on the external mixer or is non-defeatable, ensure that the phantom power switch on VoiceSoloXT is in the out position.

7. LINE 1 thru

8. LINE 2 thru

9. AUX thru

Outputs

10. MIX output

This is typically used to feed a second active VoiceSoloXT, designated as the right channel, in a stereo setup. The OUTPUT level and the EQ settings on the front panel of VoiceSoloXT are sent to both VoiceSoloXTs and the MONO/STEREO switch controls stereo operation. If set to MONO, the MIX out could also drive another VoiceSoloXT's line input so another musician could hear your voice and instrument the way you have it mixed and EQ'd.

11. SUB output

This output is intended to feed an active sub woofer. It is similar to the MIX output except that the LEFT and RIGHT line inputs are summed and sent here and the EQ and LOW CUT controls have no effect. The OUTPUT control sets the master level. No Low Pass filter is applied on this output.

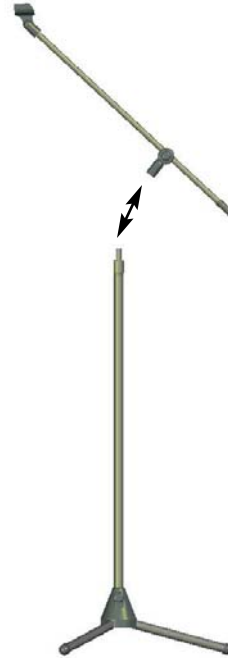
MIC STAND MOUNTING

VoiceSoloXT Placement Options

VoiceSoloXT can be placed in 4 different ways. This versatility allows you to use it as a mic stand mounted monitor one night, a PA system on another and then use it at home for practice or jamming.



1. Separate the boom from the stand by unscrewing the boom from the vertical shaft of the microphone stand. To do this, tighten the clutch you use to raise and lower the stand first. This makes it easier to unscrew the boom section. Hold the base of the stand with one hand and turn the boom counterclockwise (looking down from the top) with the other hand.



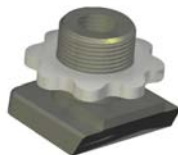
Mic Stand Mounting

Mic Stand Integration

What you need:

- VoiceSoloXT
- Tripod microphone stand with boom - must be the style where the boom may be unscrewed from the vertical shaft of the microphone stand.
- VoiceSoloXT adaptor hardware including:

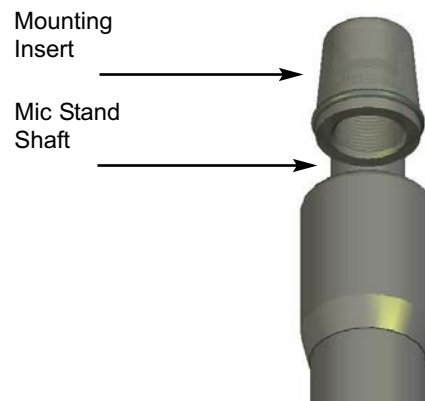
Mic Boom Mount Attachment



Mic Stand Mounting insert



2. Screw the Mic Stand Mounting Insert on to the vertical shaft of the microphone stand. (If your stand has 3/8", European thread it will be necessary to use a 5/8" to 3/8" thread adapter, commonly included with both microphone stands and microphone clips)



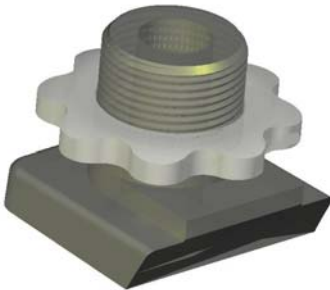
- * Tip: If you find that your VoiceSoloXT wobbles on the stand, try wrapping the Mic Stand Shaft threads with Teflon thread tape before screwing on the Mic Stand Mounting Insert. Teflon thread tape can be found at stores that sell plumbing supplies.

MIC STAND MOUNTING

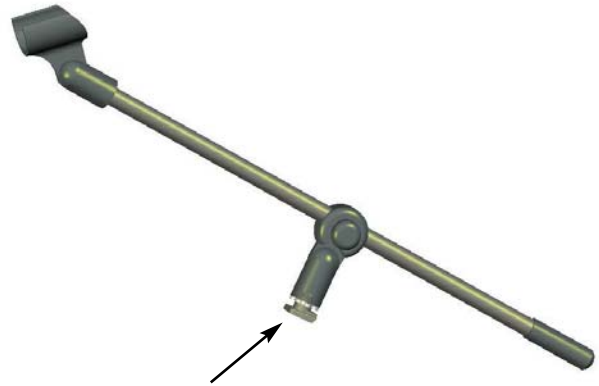
3. Place VoiceSoloXT on the mic stand so the stand goes into the hole on the bottom of the VoiceSoloXT. If you don't need to mount VoiceSoloXT on a boom stand, you are finished with your setup. If you require the boom, continue to the next step.



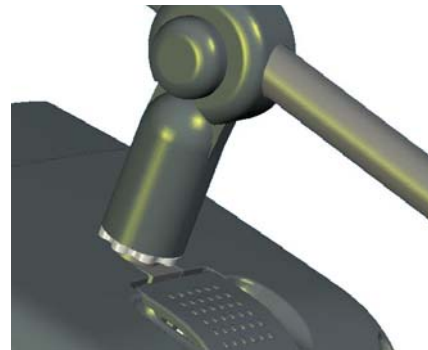
4. The Mic Boom Mount is found in the bag of parts that came with your VoiceSoloXT. There are two versions: a thin one for European stands and a wider one for the rest. This adapter connects the boom of your mic stand with VoiceSoloXT. It is designed to fit into the top receptacle in VoiceSoloXT.



5. Screw the Mic Boom Mount Attachment into your boom.



6. Lift the lid on VoiceSoloXT, and while holding it open, slide the Mic Boom Mount attachment, on the boom into slot on top of the monitor and let the lid close.

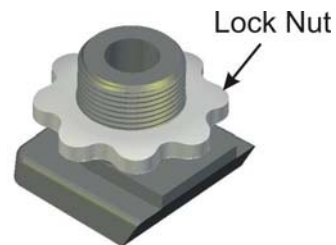


MIC STAND MOUNTING

7. Your VoiceSoloXT should now look like this.



2. Still holding the boom so that it does not swing away, turn the lock nut counter-clockwise until it's snug against the bottom of the boom. Note that it's not possible to completely tighten the lock nut with your fingers, the final action is done by swinging the boom snug against the lock nut.



Adjusting the Boom

To optimize line-of-sight and audibility it is usually better to have the monitor situated somewhat beside the singer. To do this it is necessary to adjust the position of the boom. The steps required to adjust the position of the boom are as follows:

1. With the VoiceSoloXT integrated into the mic stand and boom, loosen the boom by rotating to the right while holding onto a corner of VoiceSoloXT.

3. After tightening the lock nut with your fingers, swing the boom left, tightening to the desired position. It may be necessary to go through steps 1 - 3 a few times to get the boom tightly where you want it. The boom must be tight or the weight of the mic can cause it to swing out of position.

Read the next section to learn how to connect your cables and power up VoiceSoloXT.

MAKING CONNECTIONS

Introduction

The following paragraphs should be read at least once to learn more about safe and successful use of VoiceSoloXT.

Hooking up AC power

IMPORTANT - Before connecting the AC cable, confirm that the power specifications printed above the power input connector are correct for your area. VSM powered monitors do not feature automatic AC switching which is due to the high power to size ratio of BASH amplifiers.

When you have confirmed that the AC standard is correct, turn the Power switch on VoiceSoloXT OFF and then plug the supplied AC cable from the input on VoiceSoloXT to a power receptacle.

Good audio practice suggests that you always turn the front panel Output level all the way down before switching on power with the power switch.

Now, apply power with the On/Off switch. The POWER LED on the front panel will glow. If it doesn't, check that the power source from the wall is good and that the power cable to VoiceSoloXT is connected tightly.

Using the Onboard Mic and Line inputs

The VSM-300XT can be used with or without the included I/O box. The Mic and Line input connectors on the monitor itself allow it to be used without the I/O box for music reinforcement or public address. See the Setup Diagrams section later in this manual for hookup possibilities.

Before connecting audio cables

Turn the front panel OUTPUT control so the level is off and set the LOW and HI EQ controls to 12 O'clock (straight up). Leave the LOW CUT switch out.

Plug in your mic

If your mic is phantom powered, push the Phantom switch in after you've connected your mic. Adjust the front panel MIC IN knob so that only the loudest note you will sing lights the red CLIP LED. If the loudest notes don't light the CLIP LED, press the +20 switch to add gain.

Plug in your instrument

You can adjust the mix level of this instrument with the LINE IN control once you've raised the OUTPUT level. If the CLIP LED lights while playing your instrument, lower the LINE IN level or reduce level from the instrument.

Making adjustments

Now raise the OUTPUT level slowly while you sing or say "check" into the mic. Once this level is good, you can adjust the LINE IN level to taste. Now that the levels are balanced, you can balance your vocal tone with the SHAPE control and the overall tone with the EQ controls. As always, when making adjustments, especially EQ, lower

the OUTPUT level first then raise it carefully. You're now ready to perform with VoiceSoloXT!

Using the I/O (Input and Output) connector box

Why do I need a separate box for connections?

The I/O box becomes necessary when you want to connect to, or to create, a PA system from VoiceSoloXT.

- It allows the VSM-300XT to be a versatile hub with more inputs and outputs.
- It also offers stereo capability when you add another active VoiceSoloXT.
- The I/O box is the key to retaining local control of your monitor mix and level while feeding a PA.

With typical monitor systems, you run your signal sources (vocal mic, guitar, cd player) to a mixer on the other side of the stage and request changes or run over and do them yourself away from your monitor. The VoiceSoloXT difference involves connecting your sources directly to the VSM-300XT, mixing them locally while at the same time passing them on unmixed to the PA mixer for your audience to enjoy. This is only one scenario, there are others discussed in the Setup Diagrams section later in the manual.

First

Follow the instructions in the Hooking up AC Power section at the top of this page.

Before connecting audio cables

Turn the front panel OUTPUT control so the level is off and set the LOW and HI EQ controls to 12 O'clock (straight up). Leave the LOW CUT switch out.

Connect the supplied multipin cable

This cable has male and female jacks that only fit into the respective jacks on VoiceSoloXT and the I/O box.

Plug in your mic

Connect your mic to the MIC input on the I/O box or VoiceSoloXT itself. If your mic is phantom powered, push the Phantom switch on VoiceSoloXT after you've connected your mic. Adjust the front panel MIC IN knob so that only the loudest note you will sing lights the red CLIP LED. If the loudest notes don't light the CLIP LED, press the +20 dB switch to add gain.

Plug in your instrument

You may connect a mono instrument to LINE LEFT (MONO). If you have a stereo instrument or signal source such as a music player, connect it to the LINE LEFT and RIGHT inputs. You can adjust the mix level of the line input(s) with the LINE IN control once you've raised the OUTPUT level. If the CLIP LED lights while playing your instrument, lower the LINE IN level or reduce level from the instrument.

MAKING CONNECTIONS

Plug into the Aux Input

If you would like to blend your mic and instrument with, for example, a signal from another musician, a monitor send from a mixer, or even a MIX output from another VoiceSoloXT, connect it to the AUX input.

Connect Pass Thru

If you will be interfacing the VSM-300XT to an external mixer, connect a cable from the pass thru jack that corresponds to any inputs you have connected, for example a microphone and instrument, to individual channels on your PA mixer just as you would if VoiceSoloXT was not in the system. Adjusting levels and EQ on the VoiceSoloXT will have no effect on these signal paths so that the house PA mix can be EQ'd and mixed fully separately.

Using the MIX output

If you plan on building a stereo monitor system or PA, connect the MIX output to another VoiceSoloXT which will become the right speaker. You will need to adjust the level of the second VoiceSoloXT so that it is balanced with the left, or main VoiceSoloXT. From then on, the OUTPUT control on the main unit controls the overall volume. If you are sending your mix to another musician so they can hear you, set the MONO/STEREO switch to MONO so they can receive a sum of the left and right LINE inputs.

Connecting a subwoofer

An active (powered) subwoofer can extend low frequencies for richer monitoring or small PA sound. Connect a cable from the SUB output to the input of the subwoofer. The MONO/STEREO switch has no effect on this output but the OUTPUT control does control level.

Making adjustments

If you've waited until now to raise the OUTPUT level, do so slowly while you sing or say "check" into the mic. Once this level is good, you can adjust the LINE IN level to taste. Adjustment of the signal source received at the AUX input has to be done externally. Now that the levels are balanced, you can balance the tone of your mic with the SHAPE control and adjust the overall tone with the EQ controls. As always, when making adjustments, especially EQ, lower the OUTPUT level first then raise it carefully. You're now ready to perform with VoiceSoloXT!

A note about maximizing output volume

For maximum output volume, set the OUTPUT knob to max and adjust the MIC and LINE knobs until the CLIP LED occasionally flashes. If the MIC control is at max and the CLIP LED does not flash with a loud input, turn down the MIC knob, press in the +20dB switch on the back panel and then re-adjust the MIC knob. Be sure to first turn down the MIC knob before pressing the +20dB button; adding 20dB abruptly will likely result in feedback.

Overcoming feedback

As in any open speaker and mic combination, there is the threat of feedback. For those who aren't familiar with the term, "feedback" describes the sudden shriek or howl that happens when a mic hears the speaker's sound and amplifies it. The following tips should help you to minimize the risk.

- Always raise the volume level *slowly*, singing something into the mic as you do so. Feedback will give you a little warning if you listen carefully. When you hear a slight ringing while you check the mic, lower the level a little and this will become your "safe" monitoring level.
- Be careful when boosting EQ beyond the 12 O'Clock position on the controls. This is especially true of adding highs. You should lower the level a small amount first when boosting EQ. Note that adding EQ is like turning up the volume in a limited frequency range so reducing the volume when adding EQ isn't like making your monitor quieter.
- Add SHAPE EQ in small, gradual amounts as you sing and test for feedback. SHAPE adds highs while cutting mids and lows so, at high SPL levels it may cause feedback.
- Consider your placement. When VoiceSoloXT is slightly off to one side as opposed to directly in front of you, you will hear it better and can hear well with less level. Side placement is also optimal when using mics with a hyper-cardioid pickup pattern because, in exchange for reduced sensitivity at the back-sides of the mic, there is more sensitivity directly at the back of the mic.
- When using handheld mics near VoiceSoloXT never point the mic at the speaker. This seems obvious yet it happens all the time.
- When your mic is connected to a mixer and VoiceSoloXT is fed by a monitor send, ensure that the monitor send is Pre-EQ. This allows you to add EQ to the main PA sound on your channel but to send a flat (no EQ) signal to VoiceSoloXT. With a good mic and a strong singer, a flat monitor is likely to be louder than an EQ'd one.

SETUP DIAGRAMS

Setup diagrams

The following figures show a few of the many ways VoiceSoloXT can be used for monitoring or PA purposes.

Fig. 1: The common monitor mix

In this application you will use a single monitor mix containing several input sources from a mixing console as the input to the VSM-300XT. This allows all performers to hear each other and this helps with vocal blending. In this setup, there is no “more me” control because changing the volume of the VSM-300XT will raise or lower the entire mix at once as opposed to emphasizing your voice in the mix.

Fig. 1

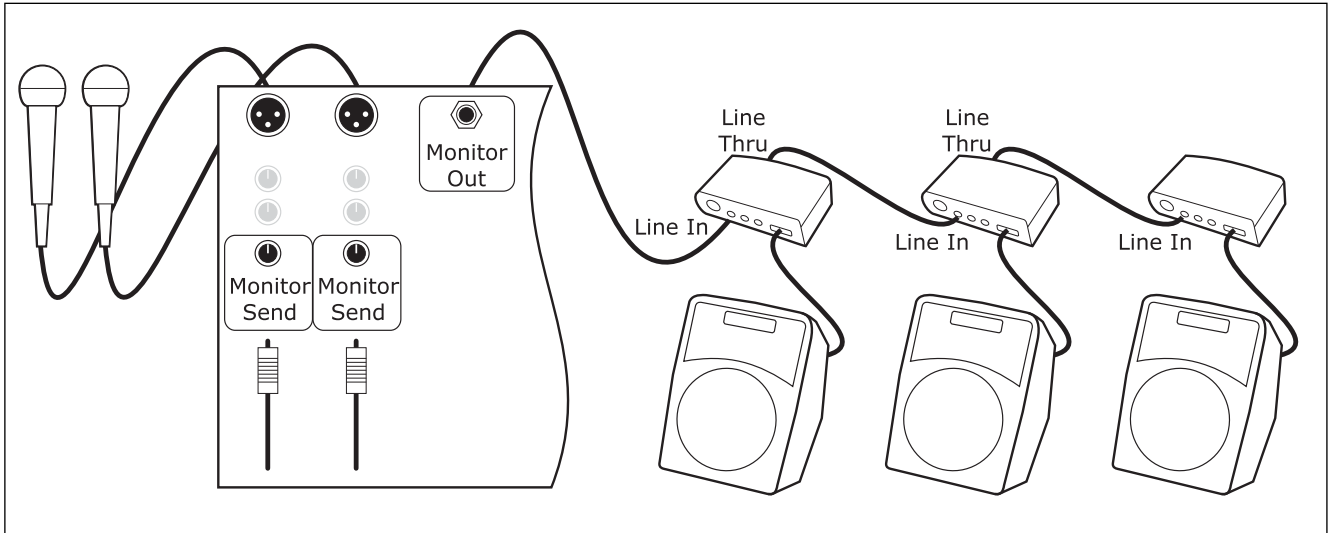
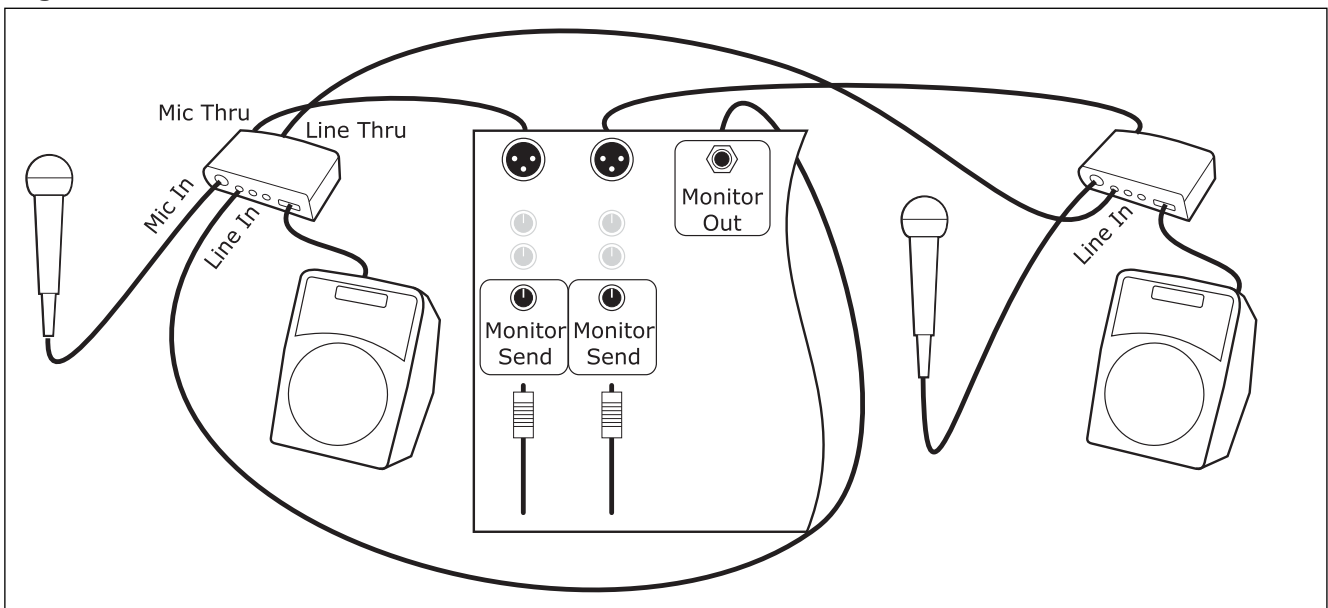


Fig. 2: Common monitor mix with “more me” control

Each performer connects their mic to the Mic In on the VSM-300XT and then thru to the PA. Normally, this would mean no ability to hear others in the monitor but this connection scheme *also* is fed by a monitor send from the PA. The key is to get an acceptable monitor mix from the external mixer to VoiceSoloXT first, setting the level with the LINE IN control on VSM-300XT. Once this is set, it's possible for each performer to raise their own mic level above the rest with the MIC IN control. This scheme requires that the external mixer be analog; digital mixers have latency which would cause uneven frequency response.

Fig. 2

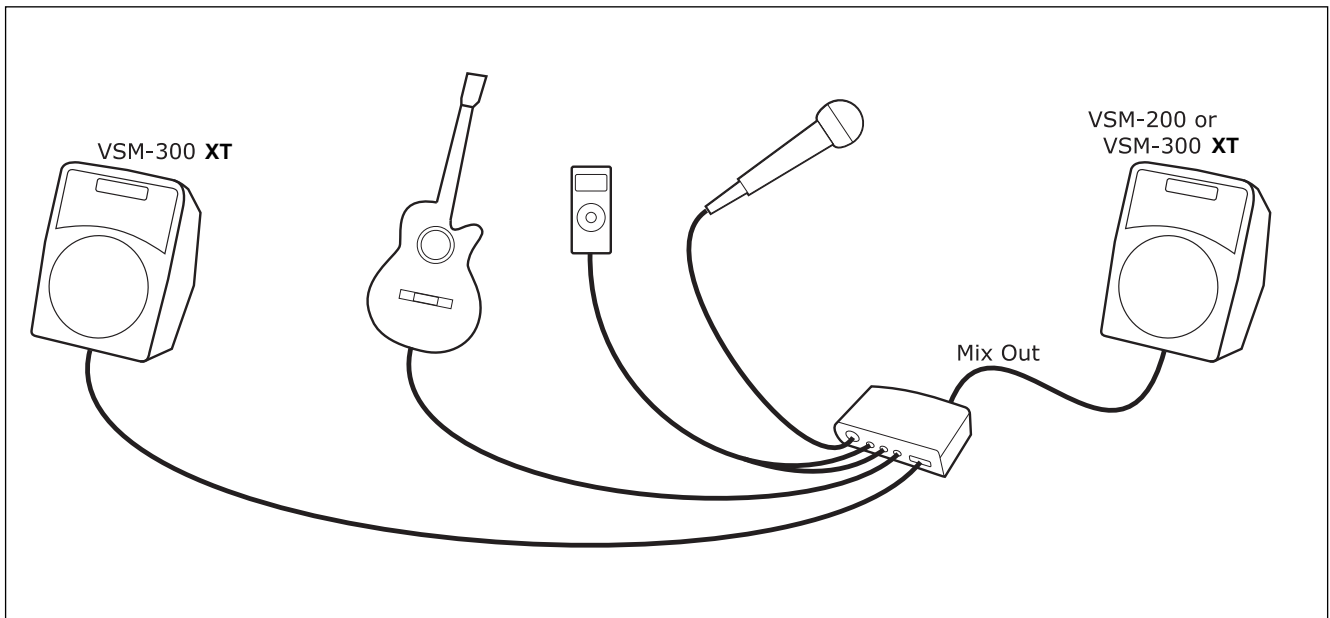


SETUP DIAGRAMS

Fig. 3: Stereo PA/monitors with multiple inputs

This small setup is good for a single performer who sings and plays to backing tracks. A guitar, a stereo MP3 player (or equivalent) and a mic all can be sent to the VSM-300XT. The MIX output of the VSM-300XT drives the LINE IN of the second VoiceSoloXT which becomes the stereo right speaker. In this case, the OUTPUT control on the main VSM-300XT is the master volume (after the left/right balance is set using the volume control of the second VoiceSoloXT). Optional connections could include a sub-woofer driven from the Sub Out on the I/O box or individual pass thru to a recording mixer or PA.

Fig. 1



SPECIFICATIONS

Audio Inputs

All inputs and outputs are balanced

(Onboard)

¼-inch Line input

XLR with 42VDC phantom power and switchable sensitivity
range 0db/+20db

(I/O connector box)

¼-inch Line input (Left/Mono)

¼-inch Line input (Right)

¼-inch Aux input

XLR Mic input with 42VDC phantom power

Sensitivities:

Mic input - (+20 dB switch out) +4 dBu to -23 dBu
(+20 dB switch in) -16 dBu to -43 dBu

Line input - +20 dBu to -13 dBu

Audio Outputs

¼-inch Mix output (Slaves to Output level and EQ)

¼-inch Sub output (Slaves to Output level only)

¼-inch Line thru (Left/Mono)

¼-inch Line thru (Right)

¼-inch Aux thru

XLR Mic thru

Power Amp

150 watts BASH® technology into 4 ohms (200 watts peak)

Distortion: 0.5% @ 150W; 10% @ 200W

Frequency response: 75 Hz–20 kHz

EQ

Low: ± 10 dB @ 120 Hz

High: ± 10 dB @ 15 kHz

“Shape” (mic input only) complex curve

Speaker

Speaker: 6.5 inch patented ICT custom-designed point
source driver includes inductively coupled tweeter

Nominal impedance: 4 ohms

120 Watt Program / 240 Watt Peak power handling

Conical dispersion: 90 degrees

Frequency response: 120 Hz – 20 kHz

Peak SPL: 116 dB @ .5 meter

Case

Enclosure: molded aluminum with integral bass port

Color: Black

Dimensions (H x W x D): 9" x 7" x 9.75"
(23 cm x 18 cm x 25 cm)

Shipping weight: 12 lbs. (5.5 kg)

Net weight: 10.8 lbs. (4.9 kg)

AC

Three non-interchangeable units:

220-240 VAC ~60 Hz 1.2A Fuse: T1.25AL 250V

120 VAC ~60 Hz 2A Fuse: T2AL 250V

100 VAC ~50/60Hz 2A Fuse T2AL 250V

